

## TODI

### *STOP 5 - Visit to the Fosso delle Lucrezie Landslide*

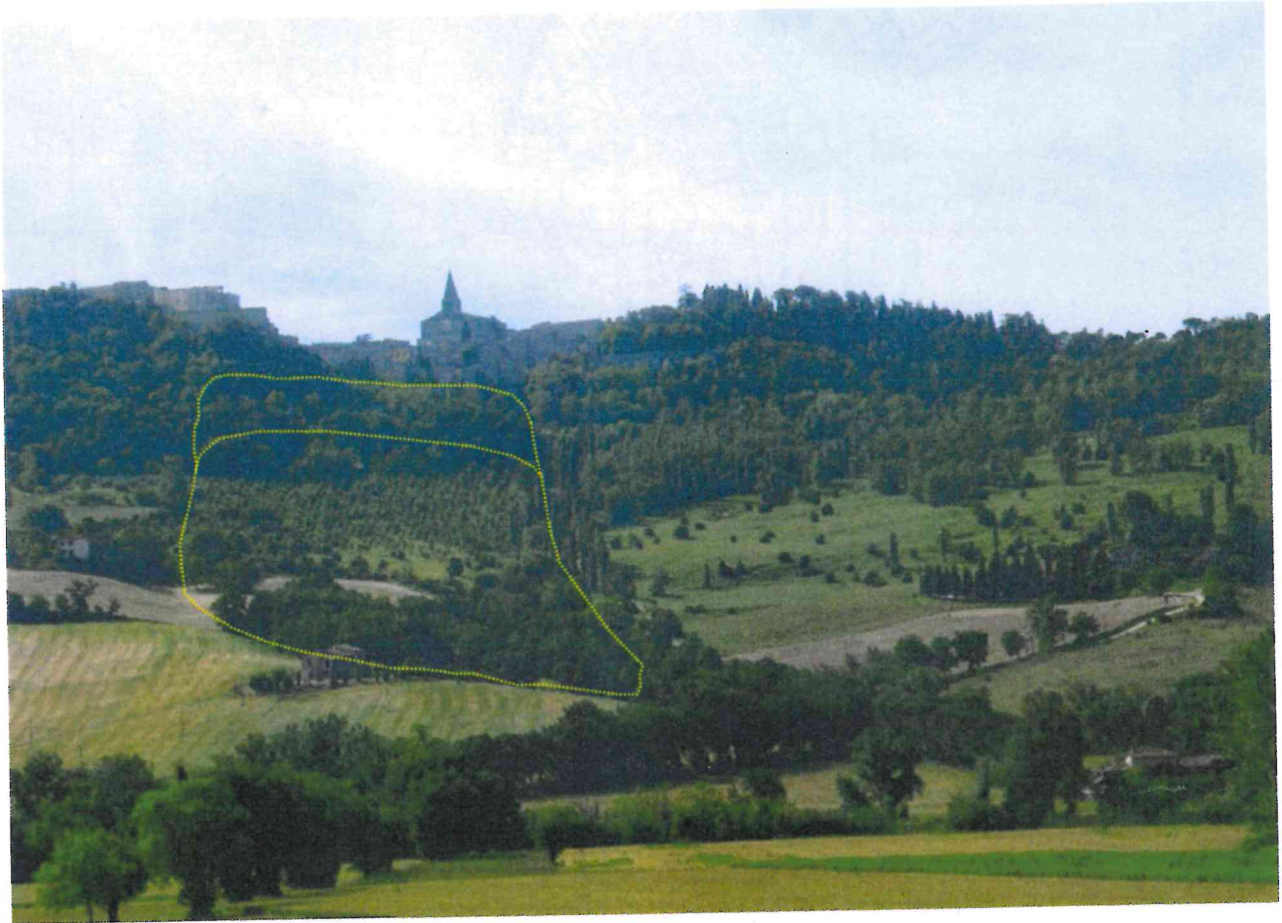
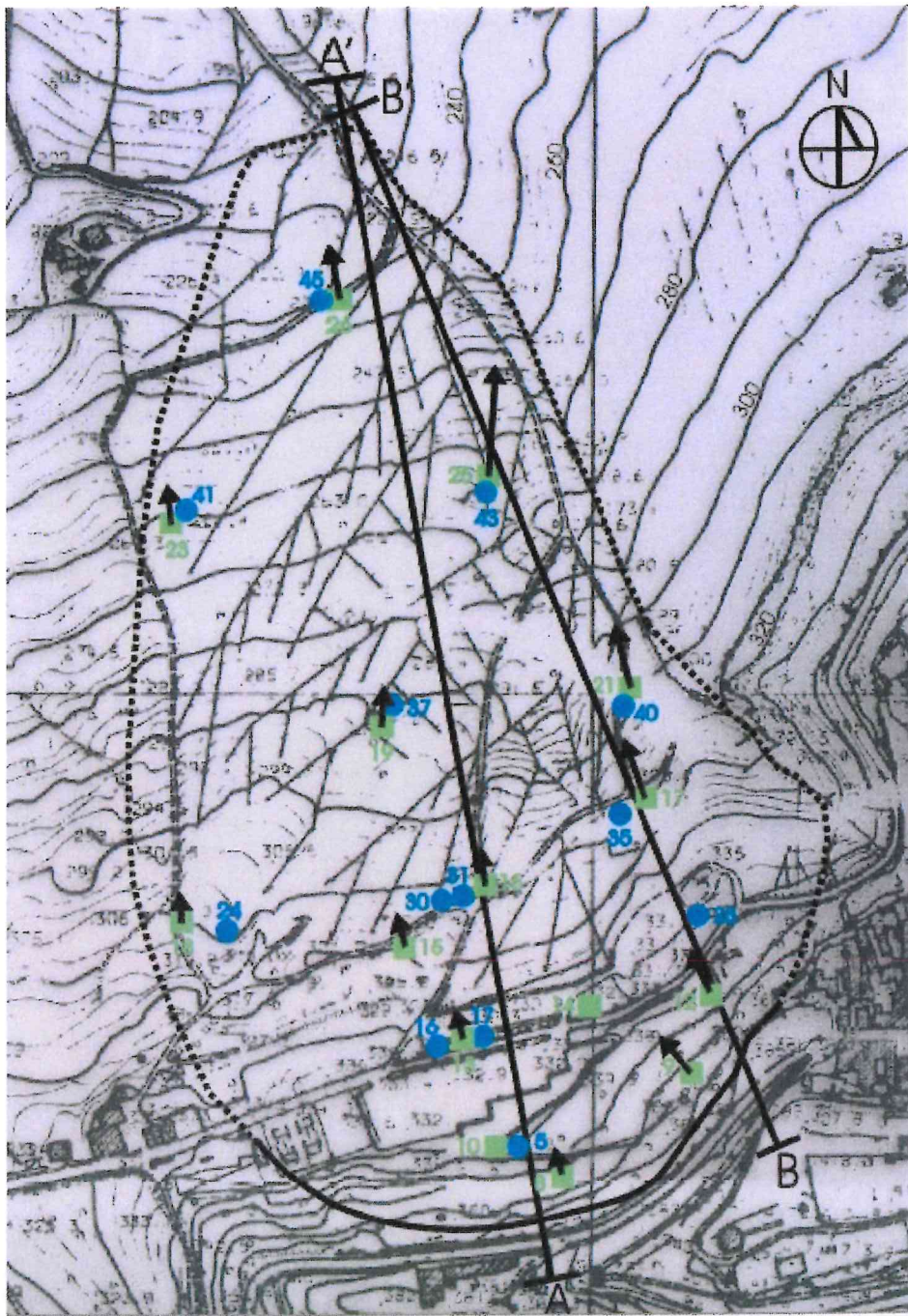


Fig. 16. Panoramic view of the Fosso delle Lucrezie landslide .

TODI - PORTA ORVIETANA.  
Of the former gate of "Porta Orvietana" there are only the massive remains left.





- Inclinometer
- Piezometer
- Direction of movement

Fig. 17. Loreto village. Map of monitoring instrumentations.